

PHILIPS

Water purifier

Cleaning kit

ADD584/10

ADD582/10



ADD58

ADD58

Content

English..... 2

English

Before Use – Important Notes

- It is recommended to perform descaling every 1 months or more often to protect the filter lifespan and filtration performance.
 - If the product does not produce water due to long-term lack of descaling, and water production does not resume or stops again shortly after descaling, this indicates that the filtration cartridge is also clogged by scale
- Please replace the [filtration cartridge](#) and run the descaling process once again before replacement.
- If the filtration cartridge is replaced after descaling, please reset the filter life counter according to the filter replacement guide on the product.
 - Descaling kit **ADD582** is suitable for **ADD6920**, **ADD6921** and **ADD6922**
 - Descaling kit **ADD584** is suitable for **ADD6901** and **ADD6912**

1. Water Circuit Descaling

Step-by-step instructions

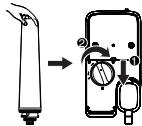
1. Disconnect the power supply, remove the raw water tank, and open the top cover.



2. Use the filter wrench to rotate the filter counterclockwise to the "unlock" position and remove

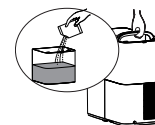


it.

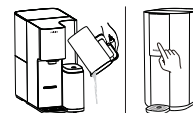


3. Insert the descaling cartridge into the filter holder and rotate clockwise to the "lock" position.

such as Philips, DM, Durgol, DeLonghi, etc. Place the raw water tank back, close the lid, and reconnect the power.



5. Empty the purified water jug or purified water tank (see chapter 2).



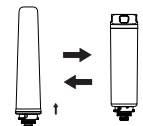
6. Wait according to the following conditions. Do not dispense water during this time:

1. If the product produces water normally → wait **2 hours**
2. If the product is heavily scaled and does not produce water → wait **4 hours**

7. Pour out the citric acid solution from the raw water tank, rinse it thoroughly, then refill with tap water up to the MAX line.



8. Disconnect the power, remove the descaling cartridge, and reinstall the filtration cartridge



2. After descaling – flushing

1. If the product has an external water jug: Reconnect the power and wait for water production. Each time the jug is filled, discard the water and place it back. Repeat this process **2 times**.

2. If the product does not have an external water jug:
Place a large container under the water outlet.
Select "85°C" + "300 ml".
(If the "water production" indicator flashes, wait until it turns off)

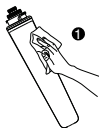
3. Waterway cleaning

(Performed automatically as part of the flushing steps above.)

4. Storage of the Descaling Cartridge

The descaling cartridge can be reused multiple times.

After descaling, it is recommended to wipe the cartridge dry, wrap it in plastic wrap, and store it properly.



5. Error Codes

E6 alarm for model **ADD6901** → If error E6 appears after 30 minutes, disconnect the power supply and let the descaling solution act for 2 hours. Then follow point 7 of chapter 1. Water Circuit Descaling.

E06 alarm for models **ADD6912, ADD6920, ADD6921, ADD6922** → Disconnect the power and reconnect it.

For model **ADD6912**, once the raw water tank lid is put back in place, the descaling process will start automatically. The Water Filtration indicator "💧" will light up and flash. Shortly afterwards, the water quality indicator on the filtered water pitcher will light up orange and begin flashing. This is normal and does not require any action from the user. Once descaling is complete, continue with step 7.